



Whatever means of transportation,
SPYmobility

ensures a comprehensive monitoring of your product,
 from shipment to delivery.

A solution designed for all means of transportation from simple shipment of a refrigerated case to long range transport of sensitive goods by air or sea.

SPY mobility is a **temperature recorder** which allows the **geolocation of the monitored thermo-sensitive products** during transportation.



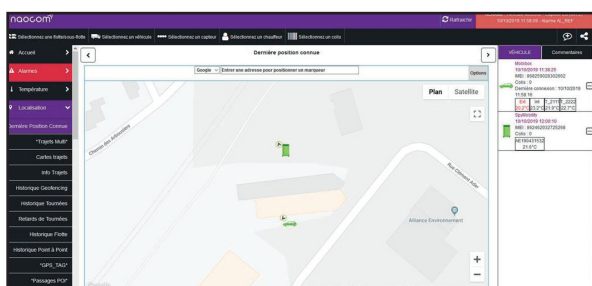
In case of temperature excursions, **real-time alarm notifications are sent to different receivers by email or sms/text message** to perform corrective actions and save your goods.

Data are transferred to the cloud and can be managed on a secured platform via smartphone, tablet or PC.

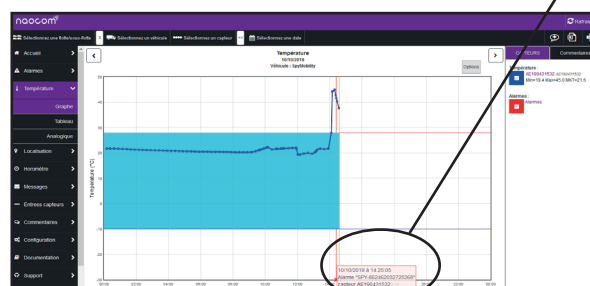
An intuitive web interface to monitor the temperature of your thermo-sensitive products during the shipment and to locate them in real-time on a map.



Non contractual picture



Current position of vehicle fleet
 View information by vehicle

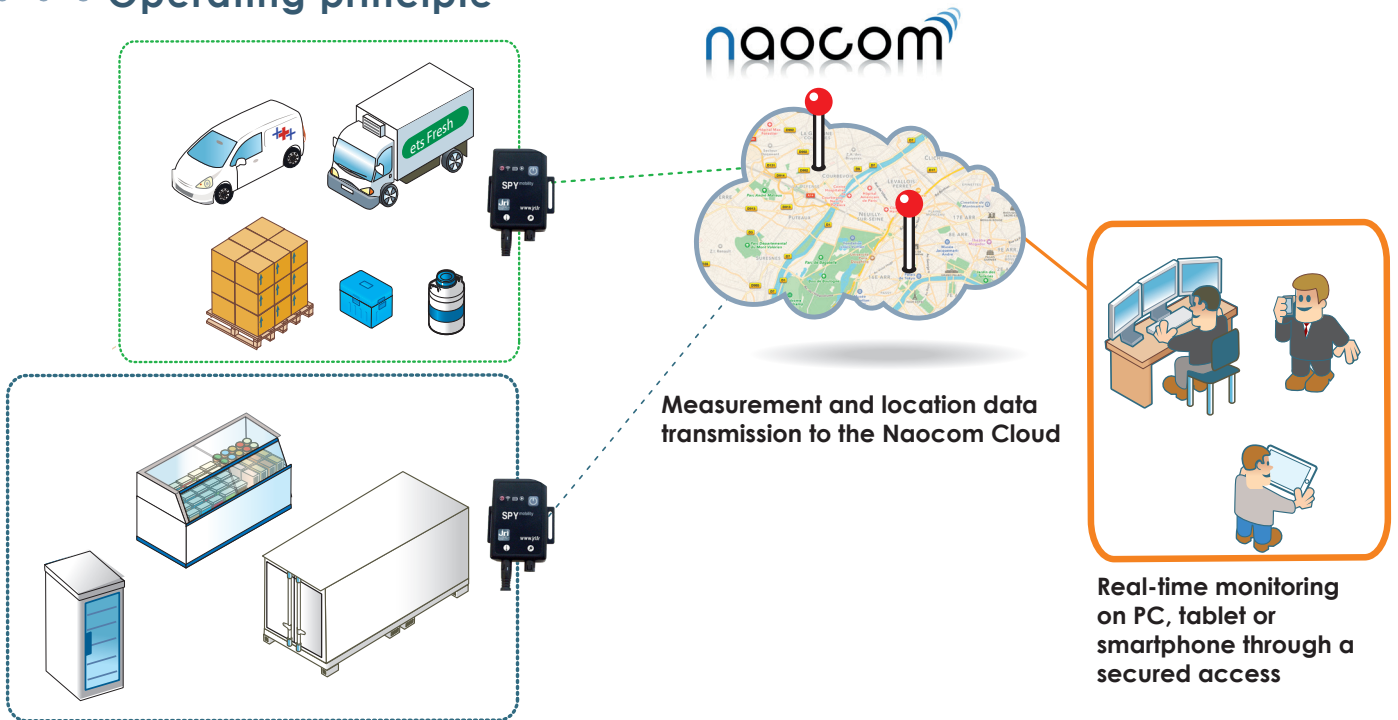


Display of temperature curves and parameter thresholds
 Information on alarms identified

Alarm



Operating principle



Real-time temperature and location measuring and recording of your thermo-sensitive products in :

- Refrigerated vehicle
- Pallet of goods
- Isothermal box
- Cryogenic tank
- Refrigerated container
- Refrigerated display cabinet, ...

Technical features

SPY mobility is composed of a **GPS/GPRS device** and a **5th generation digital probe with high metrological quality** to meet the requirements for monitoring thermo-sensitive products.

The ISO 17025 calibration of the probe can be performed by **a simple exchange, without interruption of monitoring.**

GPRS transmission device

- GPS : 12 GPS channels SIRF IV A-GPS included
Accelerometer 3D - Sensitivity : <1mg
- GPRS Modem
- Location : Outdoor GPS / GSM
- Operating conditions :
Standard model : -20°C to +60°C
Long battery life model : -40°C to +60°C
- Certifications : CE 007 - RTTE RoHS - EN 12 830*
- Storage : 10 000 measurements
- Leds function : Module activated
GPRS transmission
Power supply
Alarm
- Battery-powered** :
Standard model : 12 days
Long battery life model : 50 days
or mains powered models available
- Dimensions :
Standard model : 89x59x25 mm
Long battery life model : 89x59x37,5 mm

5th generation digital probe

- Measurement range :
T : -196°C to +80°C (depending on the probe)
T/RH : -30°C to +70°C / 0% to 100% RH
- Type of sensor : Digital
- Memory : Internal - Metrological information saved inside
- Models :
1. Temperature
2. Ultra-low temperature
3. Temperature / Hygrometry



*Long battery life model only

**With a measure every 15mn and a data transmission on the Naocom Cloud every 6hrs

More information, contact us at +33 3 81 30 68 04 or info@group-mms.com