



Nano SPY T3

Mini Extreme Temperature Data logger
2,4GHz radiofrequency communication



Non contractual photo

Presentation

The Nano SPY T3 measures and records temperature with its external probe. It transmits the data to a nearby LINK module via 2.4 GHz radio frequency communication. The data are then automatically sent to the JRI secure Cloud for hosting, and will be managed from JRI MySirius web application. If thresholds are exceeded, alerts are transmitted in real time to react immediately. Designed to monitor thermo-controlled chambers, the sensor can be fixed thanks to its magnet outside the equipment.

Technical features

	Low T°C Version	High T°C Version
Interface	Status LED and On/Off touch sensitive button	
Measurement range	-200°C to 0°C	0°C to +200°C
Accuracy	±0.2°C from -20°C to 0°C ±0.5°C out of this range	±0.3°C from 0°C to +100°C ±0.5°C out of this range
Communication frequency	2,4 GHz (802.15.4)	
Memory	10 000 data points	
Sensor	External stainless steel PT100 - Ø2,9x25mm	
Operating conditions	-20°C to +50°C	
Resolution	0.01	
Measuring and transmission period	1 mn	
Internal memory recording period	Adjustable from 1 mn to 24 hrs	
Response time σ_{90}	~ 2mn	
Protection	IP65	
Case	Polycarbonate – Food contact	
Power supply	Lithium 3,6v battery - Replaceable	
Battery life	6 years	
Dimensions and weight	63 x 42 x 25 mm / ~ 60 g	
Cable length	50 cm or 3 m	3 m
Fixation	Fixing eyelets and integrated magnets	
Supplied with	Red identification ring Double-sided tape and protective shell User manual can be download on www.jri-corp.com	
Compliance	CE, ROHS, FCC, ETS 300-328	
Standard calibration points	-80°C / -10°C	+20°C / +100°C

Benefits

- **Easy-to-use**
The sensor is ready to use and has operating and alarm lights



- **Excellent measurement accuracy**



Fixing eyelets



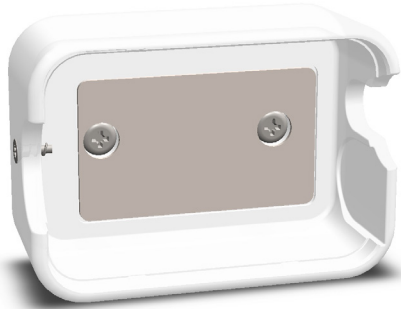
Replaceable battery and non disconnectable probe

PART NRS

- 11693 E : Nano SPY T3 3m (High T°C)
- 11572 E : Nano SPY T3 50cm (Low T°C)
- 11573 E : Nano SPY T3 3m (Low T°C)
- Without battery models:*
- 11693 X : Nano SPY T3 3m (High T°C)
- 11572 X : Nano SPY T3 50cm (Low T°C)
- 11573 X : Nano SPY T3 3m (Low T°C)

FT 11693 EN A

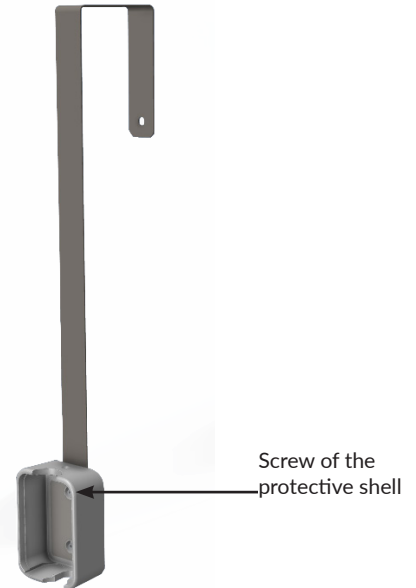
Accessories



Protective shell (Included by default)

Part nr. 12715

The protective shell is used to protect all Nano SPY mini-data loggers from shocks. It is supplied with a double-sided adhesive to be glued to all surfaces and an anti-theft screw for the Nano SPY. It can also be screwed (screws not supplied).



Caliper for protective shell

Part nr. 12716

The caliper is designed for the fixing of a protective shell of Nano SPY on cabinets with horizontal opening to facilitate cleaning operations. The protective shell of Nano SPY can be directly glued to the bottom of the bracket and/or fixed with screws (provided).