

Monitoring Solution of Environmental Parameters

Centralized Supervision | Real-time Alerts | Cloud & Server Modes

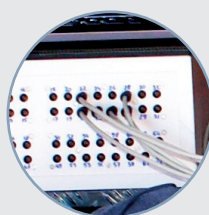


Calibration Module

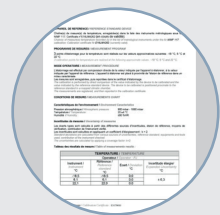
Calibration and adjustment operations automation
Metrology data synchronisation



Calibrate, check and
adjust your measurement
chains



Optimize your calibration
process



Manage efficiently
the metrology
follow-up of your fleet

An optional module that simplifies your calibration process and allows you to manage the metrology of your measurement equipments autonomously



The Calibration module of the JRI-MySirius solution allows to perform calibration of the Nano SPY, LoRa SPY, JRI Digital probes, Labguard 3D sensors and other brands.

Increase efficiency with features tailored to your needs

	Functions	Level 1	Level 2
4.0 VERSION	<i>Calibration module available in Cloud solution</i>		
	Calibration in 2 points	✓	✓
	Use of the JRI 's MPE	✓	✓
	Reports customization	✓	✓
	Calibration in x points with automatic search of the best stability	-	✓
	Use of customized MPE's	-	✓
	Access to the audit trail (with Advanced subscription)	✓	✓
	Calibration of all Nano SPY & LoRa SPY recorders (except JRI digital probes and the Nano SPY TH High accuracy sensor)	✓	✓
	Use of Nano SPY and LoRa SPY Reference as standard devices	✓	✓
	Conformity validation	✓	✓
4.1 VERSION	Management of the calibration bench for JRI Digital probes	✓	✓
	Calibration of new digital JRI probes (Digital Sensor X ²)	✓	✓
	Compatibility with previous probes generation (Digital Sensor Evolution)	✓	✓
	Calibration of other brands devices	-	✓
4.2 VERSION	<i>Calibration module available in Cloud and Server solutions</i>		
	Compatibility with Labguard 3D Ethernet devices	✓	✓
	Drift analysis between 2 calibrations	-	✓
4.3 VERSION	Test Uncertainty Ratio (TUR), standard average measurements, electronic signature in metrology reports generated	✓	✓
	Role to finalise a metrological operation	✓	✓
4.X VERSION AVAILABILITY IN 2024	Management of calibration baths	-	✓
	Nano SPY TH High accuracy calibration	✓	✓

Optimize the intervention time with the calibration bench

Manage the bench to realize simultaneously the calibration of several new generation JRI digital probes (Digital sensor X²).

- Compatible with Digital Sensor Evolution probes
- Communication with a Nano SPY Link to send data in real time in the Calibration module of JRI-MySirius
- Up to 20 probes per bench
- Possible to manage several calibration benches at the same time



Calibration with modeling to reduce measurement errors

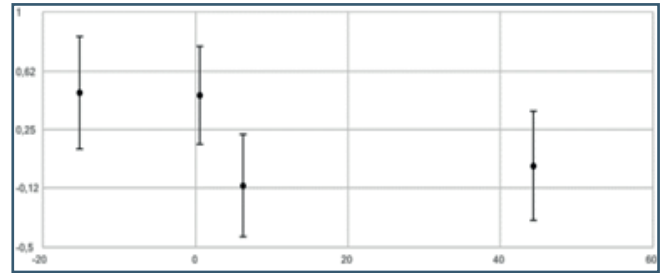
The modeling can be sent in the measurement chain in order to perform a more precise adjustment

Realize **calibrations in 3 or 4 points, and more.**

Make automatically **errors correction with modeling**
(automatic calculations with variances and covariances information).



***Improve the accuracy
of your sensors!***



The metrology on the Digital Sensor X² probes

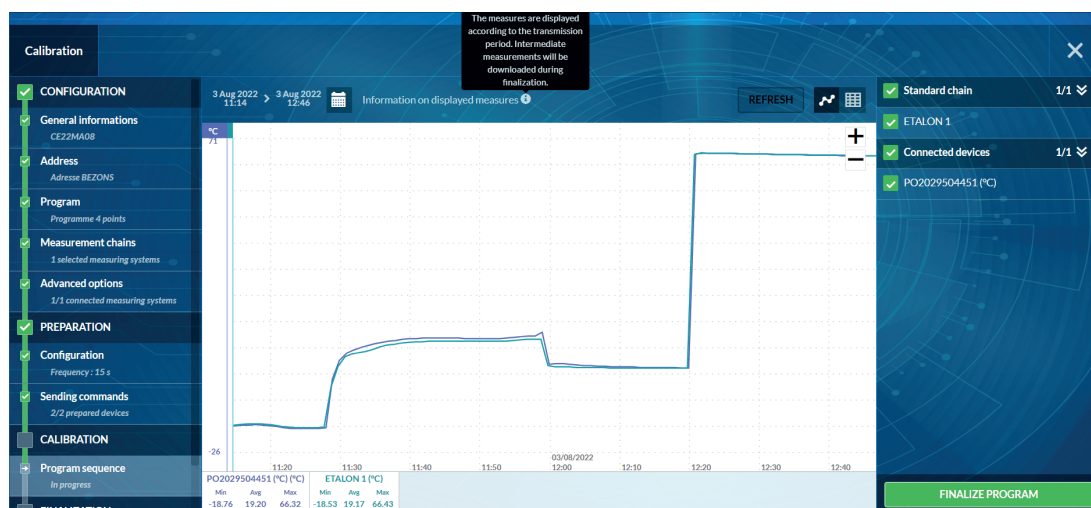
New generation of digital probes developed by JRI, the Digital Sensor X² probes have exclusive properties allowing to reduce to a minimum measurement error and uncertainty after a calibration with modeling.

Declare your equipments and set your programmes

Add your calibration environments : standards, ovens, baths, climatic rooms... then create programmes based on **calibration points corresponding to usual conditions** of your measurement chains.

Let the calibration process guide you

Follow the step-by-step instructions to perform your calibrations. You can realize **many operations simultaneously**, **calibrate and adjust your sensors in several points.**



Manage metrology of your fleet measuring devices

Customize your metrology reports (header, footer, calibration options, measuring methods...).

Generate and store your reports in the **dedicated documentary area**. Consultation and archiving periods depend of your JRI-MySirius subscription.

Follow the **history of metrology operations** realized on Nano SPY and LoRa SPY devices.

Measurement chain	Probe	Device	Measurement point	Operation date	Type	Report	Operator
AB17278002 °C	-	TRANSPORT	TRANSPORT PUBLIC_Lora - °C	6 Apr 2022	Calibration	-	JJC
AD18037041 (%)	-	AD18037041	-	-	-	-	-
AD19008413 (°C)	-	AD19008413	Private LoRa STORAGE - T°C	24 Nov 2021	Calibration	EN20AQ0014 (1) (7) (1)	Mehena Aboutit
AD19042231 + DCS0001	On/Off input DCS0001	AD19042231	Power ON/OFF TOR	-	-	-	-
AD2035100011 (°C)	-	AD2035100011	SALAD BAR - T°	-	-	-	-
CA20080125 (°C)	-	CA20080125	LoRa TEMP - °C	-	-	-	-
MS1717000055 (%)	-	MS1717000055	-	-	-	-	-
MS1717000055 (°C)	-	MS1717000055	-	5 May 2022	Calibration	123456789	Mehena Aboutit
MS1717000138 (%)	-	MS1717000138	-	8 Aug 2022	Checking	-	Tony Roumier

You can list the serial numbers of the devices in case of probe rotations.

Calibration results and threshold corrections are automatically taken into account in the JRI-MySirius software.



Automatic update of your equipment life cycle sheets.

MONITORED UNITS WITH METROLOGICAL REQUIREMENT		
	Validity period (in months)	Number of days before alarm
Calibration	12	60
Checking	12	60
Mapping	12	30
MONITORED UNITS WITHOUT METROLOGICAL REQUIREMENT		
	Validity period (in months)	Number of days before alarm
Calibration	12	30
Checking	12	30
Mapping	12	30

Set metrology alerts for the required equipments!

The concerned users will be automatically notified when a metrology intervention is to be carried out on one of your devices.

The Calibration module is compatible with all JRI-MySirius service levels.



JRI
2 rue de la Voivre
25 490 Fesch-le-Châtel - France

+33(0)3 81 30 68 04
info@group-mms.com

www.jri-corp.com
Measurement, Monitoring, and Metrology