



DIGITAL TH PROBE METAL



Characteristics

TempErature

- Measurement range : -30 to +70°C
- Resolution : 0,01°C
- Accuracy : ±0,2°C from -20 to +50°C ±0,4°C outside

Humidity

- Measurement range : 0 to 100%
- Accuracy in %RH
- Resolution : 0,01%

Accessories

- 15cm extension lead only
Included for Spy IP or
Spy Touch use
- stainless steel sintered filter



RELATIVE HUMIDITY (%RH)	TEMPERATURE (°C)					
	15	20	23 ±1°C	30	35	40
0	±6	±5	±4	±5	±5	±6
10	±4	±4	±4	±5	±5	±5
20	±3	±3	±2	±4	±4	±4
30	±3	±3	±2	±4	±4	±4
40	±3	±2	±2	±3	±4	±4
50	±3	±2	±2	±3	±3	±4
60	±3	±2	±2	±3	±4	±4
70	±3	±3	±2	±4	±4	±4
80	±3	±3	±2	±4	±4	±4
90	±4	±4	±4	±5	±5	±5
100	±5	±5	±4	±5	±5	±6

Re-conditioning

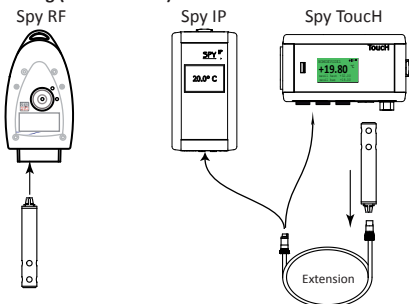
When condensation or saturation of the sensor the regeneration procedure, hereinafter, be conducted:

- Place sensor in an oven at 80-90 °C (176-194 °F) at a relative humidity <5% for 24 hours (drying)
- Then at 20-30 °C (70 °F -90) at a relative humidity > 74% for 48 hours (rehydration).

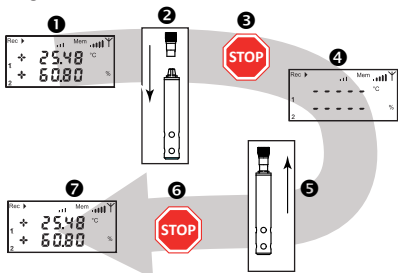
Compatibilité

Spy RF firmware	SPY IP firmware	Spy TouchH firmware	Sirius Storage	Sirius LITE	Sirius Lite LE	Sirius transport	Metrolog calibration
≥1.63	≥1.25	≥2.9.5	≥2.1.5	≥2.1.6	≥2.1.6	Non	≥2.2

Connecting (- IP or Touch)



Replacing a sensor



Dimensions

